



IQ0304100d1

Direct connected 3-Phase DIN rail Meter

- > 100 Amp MODbus meter
- > MID certified
 - > SO1 active / reactive kWh
 - > SO2 active / reactive kVARh
- > Designed for submetering off electrical loads, like EV-chargers, PV-Inverters with high Amps

Contact

www.kwhiq.com

info@kwhiq.com

+31 (0)73 544 3071



Mainfeatures

Measurement

- > Total active and reactive energy; Import and Export active and reactive energy; Instantaneous voltage and current, PF, Vrms, Irms, active and reactive power

Tariff registers

- > Total active energy
- > Forward active energy
- > Reverse active energy
- > Total reactive energy

Profiles for energy measurement modes

- > 1: Total = Forward
- > 2: Total = Reverse
- > 3: Total = Forward +Reverse
- > 4: Total = Forward - Reverse (default)

Privacy and security

Secured with 5 digit passcode

Communication interface

- > MODbus RS485/RTU DLT645 standard
- > Baudrate 9600 (d)/19200/38400/115200
- > Parity: none, odd, even (d)
- > 2x SO output
 - > SO1 is SO output for kWh (default) or Active/reactive forward kWh optional with variable constant
 - > SO2 is SO output for kVARh (default) or Active/reactive reverse kWh optionalwith variable constant
- > Optical IR

Display

- > LCD with blue backlight, Three programmable display mode; Two LED, for active and reactive energy pulse output; independent LEDs on module to indicate communication status.
- > LCD 6+2 = 999999.99kWh

Technical specifications

Reference standard

- > EN 50470-1, EN 50470-3

Approvals

- > MID/IEC/CE

Electrical

Accuracy	Active	Class B
	Reactive	Class 2
Voltage	Rated Voltage	3x230(400)V
	Voltage with standard	440V
	Operation voltage range	80% to 120% Un
	Long-range voltage	58/100V to 240/415V
Current	Rated current	5(100)A
	Starting current	20mA
Frequency	50Hz ± 2%	
Power quality	Voltage circuit	≤1W,
	Current circuit	≤12VA
Pulse constant	1000 imp/kWh	

Reliability

Meter life	≥10 Years	Data retention	≥10 Years
------------	-----------	----------------	-----------

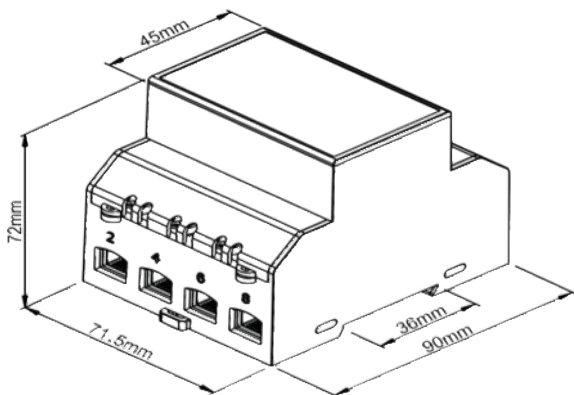
Mechanical

Dimensions (L x W x H)	71,5 x 90 x 72(mm)	Weight (Kg)	0.95
Enclosure material	PC+GF	Insulation protection	Class II

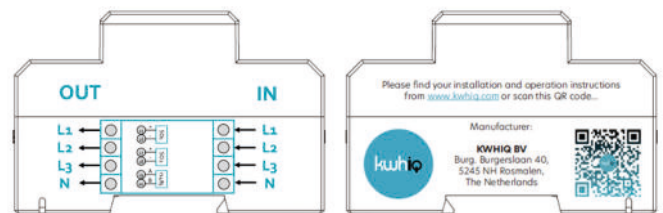
Environmental

Operating temperature	-40 ° C to 70 ° C	Storage temperature	-40 ° C to 70 ° C
Operating humidity	≤ 75% RH (max ≤ 95% RH)	Ingress protection	IP51 Indoor

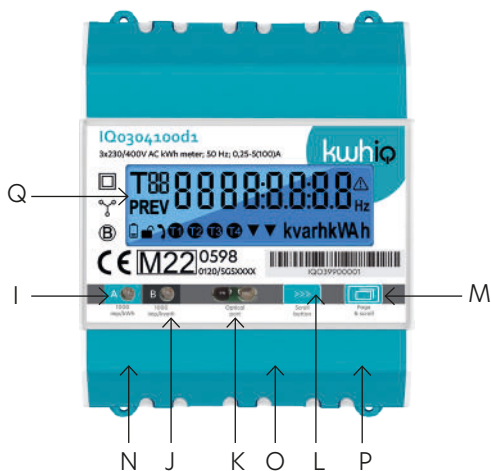
Overall dimensions



Wiring diagram



Display format



- I Impulse indication for active energy
- J Impulse indication for reactive energy
- K Far IR
- L Button for data checking
- M Button for data setting
- N SO1 output for active energy (default)
- O SO2 output for reactive energy (default)
- P RS485 output
- Q LCD screen

Contact information



Contact - NL

Burgemeester Burgerslaan 40
5245 NH Rosmalen
The Netherlands
Phone: +31 73 544 3071



Contact - BE

Metropoolstraat 11a
B2900 Schoten
Belgium
Phone: +32 32 01 95 95



Contact - UAE

Office 901 HQ Tower (North)
Dubai Science Park PO.Box: 478817
Dubai -United Arab Emirates
Phone: +971 4 4422 9701

Find us online

www.kwhiq.com
info@kwhiq.com

