



## IQ0102065BNEM01-0

### Direct 1-phase 65A meter

- > Plug and play 4G-LTE Cat-M communication module with 2G fallback and optional NB-LoT (optional support for other communication technologies like PRIME-PLC/G3-PLC/LAN/...).
- > Compliant with DLMS/COSEM.
- > Improve revenue and energy efficiency with advanced measurement and tariffication.
- > Remote authenticated firmware upgrade.
- > Last Gasp function.
- > Protected from fraud or tampering. Alarm and events record.MID approved.
- > P1 port to push data in accordance with DSMR 5.0.2.
- > Accurate clock and daylight saving time supported.

## Contact

[www.kwhiq.com](http://www.kwhiq.com)  
[info@kwhiq.com](mailto:info@kwhiq.com)  
+31 (0)73 544 3071



## main features

### Measurement and power quality

- > Energy registers: total active and reactive energy, import and export active and reactive energy, reactive energy per quadrant.
- > Rated energy registers: these energy values per tariff rate.
- > Demand: (rated) demand and maximum demand registers with configurable maximum demand integration period (typically 5, 15, 30 or 60 minutes).
- > Instantaneous/average active, reactive and apparent power
- > Instantaneous net frequency, power factor, voltage (rms) and current (rms).

### Billing data

- > 13 months meter & equipment data available; cumulative active energy import and export, cumulative reactive energy import and export.
- > 31 days cumulative active energy import and export, cumulative reactive energy import and export, cumulative reactive energy for each quadrant 1~4.

### Profiles for energy and power quality

- > 55 days logging of cumulative active energy, import and export with a capture period of 15 minutes.
- > 31 days logging of cumulative active energy, import and export for rate 1 and rate 2, with daily captures.
- > 15 days logging of average voltage, current, import & export active & reactive power, power factor. With 10 minute captures.
- > Periodicity and channels of the profiles are programmable.

### Firmware upgrade

- > Remote authenticated firmware upgrade.

### Real time clock

- > Accuracy according to EN62054-21 (< 0,5 sec deviation per day).
- > Daylight saving time supported.
- > Remote and local synchronization available.
- > RTC retention during power outages (5 days).

### Communication interface

- > Remote communication to HES via modular LTE Cat-M / NB-IoT /

2G communication module.

- > Always on or triggered configuration.
- > Last gasp to push information before powering off.
- > P1 port with RJ12 connector to push data to customer's device (DSMR 5.0.2).
- > Local communication via optical port.

### Display

- > LCD without backlight.
- > With Obis codes and icons.
- > Three programmable display modes (auto scroll, manual scroll and steady message).
- > LEDs on the WAN communication module to indicate the communication status.
- > Two LEDs for active and reactive energy pulse output.

### Anti-tamper features

Detection and alarming for:

- > Main and terminal cover open (power on and power outage).
- > Communication module removal.
- > Access with incorrect credentials.
- > Magnetic field tampering.

### Event record

- > Up to 255 kinds of event records with timestamp.
  - > Long / short term power failure.
  - > Tampering events.
  - > Voltage quality events.
  - > Firmware upgrade events.

### Privacy and security

- > DLMS Low Level Security.
- > DLMS High Level Security 5 (AES/GMAC).
- > Data encryption and authentication.
- > Key-wrapping.

## technical specifications

### Reference standard

- > EN 50470-1, EN 50470-3, IEC 62059-31/41, IEC 62052-11, IEC 62053-21/23; IEC 62056-21/46/53/61/62, EN55022

**Electrical**

<b>Accuracy</b>	Active	Class B
	Reactive	Class 2
<b>Voltage</b>	Rated Voltage	230V
	Operation voltage range	80% to 120% Un
<b>Current</b>	Rated current	5(65)A
	Starting current	20mA
<b>Frequency</b>	50Hz ± 2%	
<b>Power consumption</b>	Voltage circuit	≤2W, 10VA
	Current circuit	≤1VA
<b>Pulse constant</b>	2000 imp/kWh(kvarh)	

**Reliability**

<b>Meter life</b>	15 Years	<b>Data retention</b>	≥15 Years
-------------------	----------	-----------------------	-----------

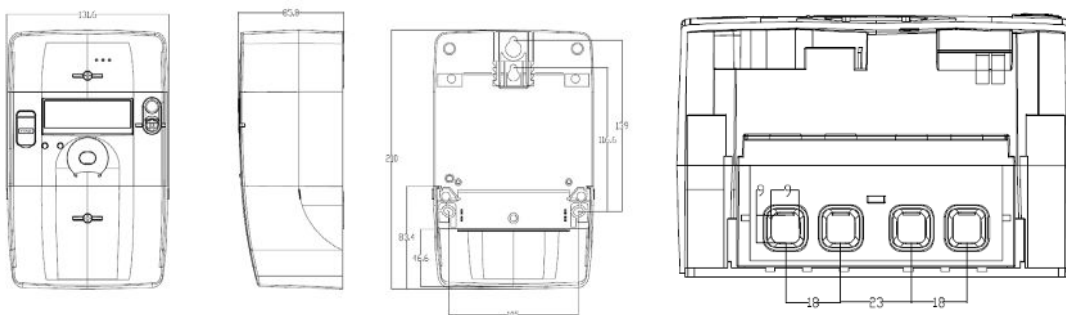
**Mechanical**

<b>Dimensions (L x W x H)</b>	210 x 131.6 x 85.8(mm)	<b>Weight (Kg)</b>	0.95
<b>Enclosure material</b>	PC+GF	<b>Insulation protection</b>	Class II
<b>Terminals</b>	Professional Lifting system with wrong connection prevention		

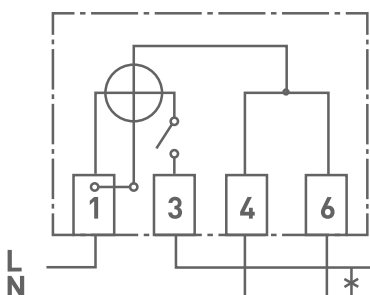
**Environmental**

<b>Operating temperature</b>	-40 ° C to 70 ° C	<b>Storage temperature</b>	-40 ° C to 70 ° C
<b>Operating humidity</b>	Maximum 95% RH	<b>Ingress protection</b>	IP54

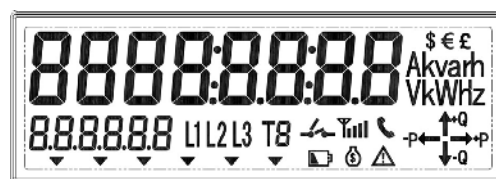
**Overall dimensions**



**Wiring diagram**



**Display format**



## contactinformation



### Contact - NL

Burgemeester Burgerslaan 40  
5245 NH Rosmalen  
The Netherlands  
Phone: +31 73 544 3071



### Contact - BE

Metropoolstraat 11a  
B2900 Schoten  
Belgium  
Phone: +32 32 01 95 95



### Contact - UAE

Office 901 HQ Tower (North)  
Dubai Science Park PO.Box: 478817  
Dubai -United Arab Emirates  
Phone: +971 4 4422 9701

## Find us online

[www.kwhiq.com](http://www.kwhiq.com)  
[info@kwhiq.com](mailto:info@kwhiq.com)

