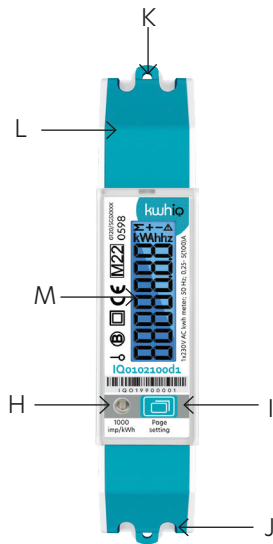


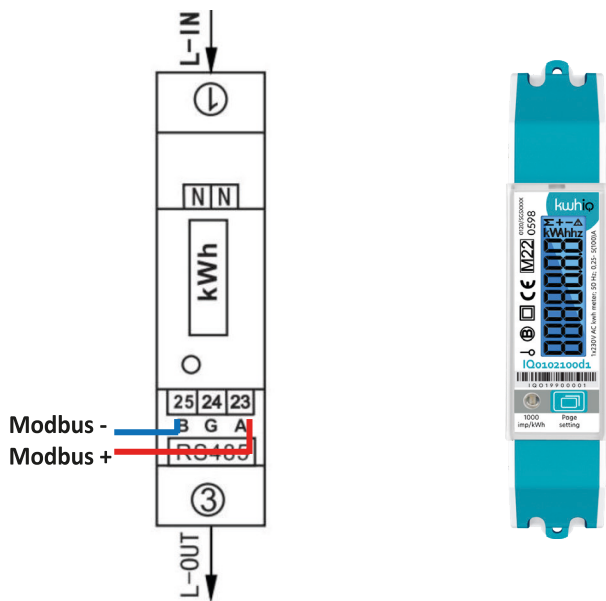
# IQ0102100d1 Configuration

## Display format



- H Impulse indication
- I Button for data checking
- J L-out
- K L-in
- L Neutral Wire
- M LCD screen

## Wiring diagram



## Configuration steps

1. Navigate to the SETUP menu by long pressing the push button (see red circle). In the SETUP menu you can enter a PIN code. By long pressing the push button you can enter digits. Press briefly to adjust the value of the flashing digit. Use this method to enter the PIN code 0000.



Default: standard mode



SETUP menu



Pincode

2. Check the following settings in the SETUP menu and change if necessary. Press long to adjust, press briefly to change variables.



Modbus ID: unique per device on the bus



Baud rate: default '9600' (19200/38400/115200)



Parity: default 'None' (odd/even)



Stop bit: default '1'

3. Long press the push button to navigate out of the SETUP menu. Configuration is complete.



QUIT

## Contact information



### Contact - NL

Burgemeester Burgerslaan 40  
5245 NH Rosmalen  
The Netherlands  
Phone: +31 73 544 3071



### Contact - BE

Metropoolstraat 11a  
B2900 Schoten  
Belgium  
Phone: +32 32 01 95 95



### Contact - UAE

Office 901 HQ Tower (North)  
Dubai Science Park PO.Box: 478817  
Dubai -United Arab Emirates  
Phone: +971 4 4422 9701

## Find us online

[www.kwhiq.com](http://www.kwhiq.com)

[info@kwhiq.com](mailto:info@kwhiq.com)

