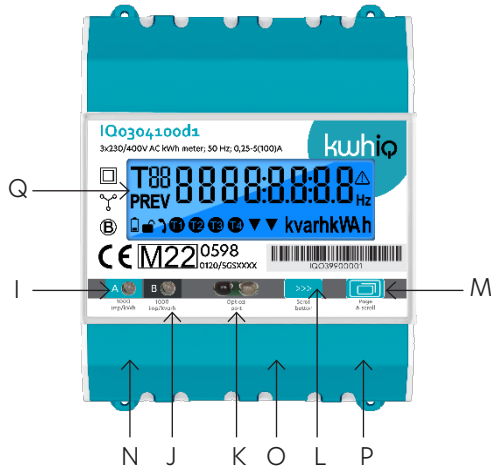


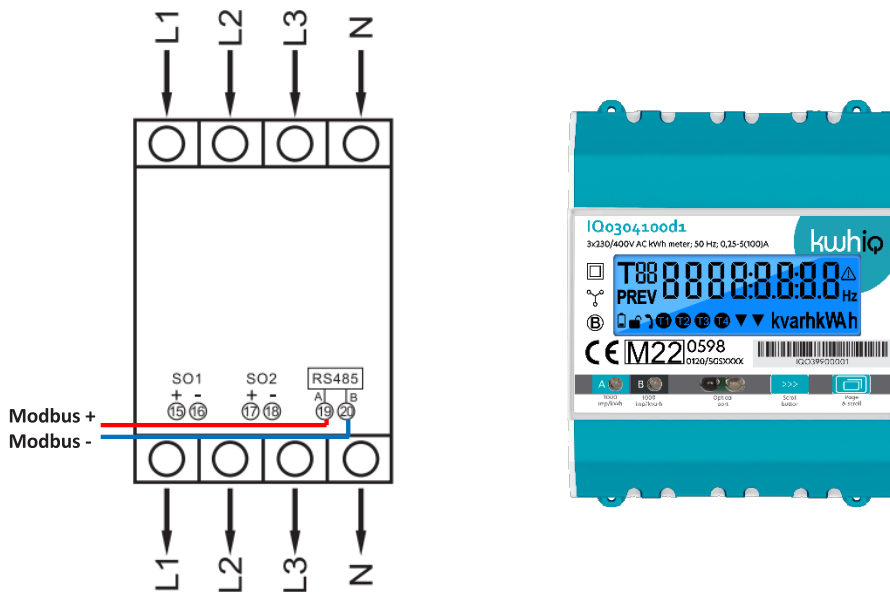
IQ0304100d1 Configuration

Display format



- I Impulse indication for active energy
- J Impulse indication for reactive energy
- K Optical IR
- L Button for data checking
- M Button for data setting
- N SO1 output for active energy (default)
- O SO2 output for reactive energy (default)
- P RS485 output
- Q LCD screen

Wiring diagram



Configuration steps

1. Navigate to the SETUP menu by long pressing the push button (see red circle). In the SETUP menu you can enter a PIN code. By long pressing the push button you can enter digits. Press briefly to adjust the value of the flashing digit. Use this method to enter the PIN code 5947.



Default: standard mode



SETUP menu



Pincode

2. Check the following settings in the SETUP menu and change if necessary. Press long to adjust, press briefly to change variables.



Modbus ID: unique per device on the bus



Baud rate: default '9600' (19200/38400/115200)



Parity: default 'Even' (odd/even)



Stop bit: default '1'

3. Long press the push button to navigate out of the SETUP menu. Configuration is complete.



QUIT

Contact information



Contact - NL
Burgemeester Burgerslaan 40
5245 NH Rosmalen
The Netherlands
Phone: +31 73 544 3071



Contact - BE
Metropoolstraat 11a
B2900 Schoten
Belgium
Phone: +32 32 01 95 95



Contact - UAE
Office 901 HQ Tower (North)
Dubai Science Park PO.Box: 478817
Dubai -United Arab Emirates
Phone: +971 4 4422 9701

Find us online

www.kwhiq.com
info@kwhiq.com

